

# GOMAG


Energy





Founder : **Ali Gürgöz**

General Manager

-  **Completed Projects : 50+**
-  **Experience : 30+ Over years**
-  **Bachelor : Mechanical Engineer**

Ali GÜRGÖZ; In 1988, he has proved his competence by serving in key roles in the management of Energy and Industrial Facility mechanical assembly projects in the sector he started in the country and abroad, by offering products and services that are in accordance with national and international standards, without sacrificing quality, occupational health and safety.

He continues to serve in the sector by carrying his thirty years of knowledge and experience to Gomag Energy, which founded in 2018.



## About Us

Gomag Energy was founded in 2018 by Ali Gurgoz. Gomag has gained a rightful place in petrochemical, refinery and power plant projects with its service quality and honesty principle.

Main fields of activity;

Construction, manufacturing installation and commissioning of industrial plants such as Iron and Steel Plants, Power Plants, Cement Factories, Oil Refineries, Petrochemical Plants.

- Pipeline installation
- Pre-com and commissioning works.
- Facility capacity increase processes.
- Revision, maintenance and repair operations.
- Fixed and floating roof storage tanks fab. and erection.
- Spherical storage tank erection.
- Construction of industrial plants, equipment installation, process piping and HVAC works.
- Installation of industrial steam boilers.
- Electrical and Instrumentation works.
- Penstock fabrication and installation.

Our biggest goal; to provide high quality service to our customers in more economic conditions and to become one of the leading companies in the industry.





## OUR MISSION

Completing the engineering, manufacturing and assembly works in high quality, just in time and at minimum cost by paying maximum attention to HSE rules in our projects.

## OUR VALUES

### RESILIENT

Be resilient for change!

### COMPETITIVE

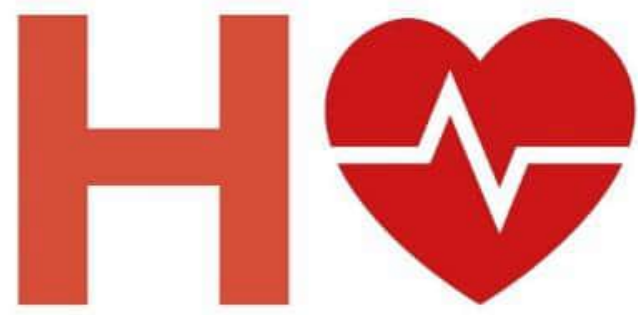
Be competitive for success!

### INNOVATIVE

Be innovative for competition!







Health



Safety



Environment



Quality



## Our H.S.E.Q. Policy

Gomag Energy is committed to continual HSE improvement in its operations through active participation of our employees, contractors and the community. It shall take all reasonable measures at its disposal to protect the health and safety of its personnel as well as to protect the environment in which it operates.

The management and personnel of Gomag Energy Ltd are committed to provide a high quality service in the area of Quality management by continuously improving client service, human resource management and company operations.

Ali Gurgoz  
General Manager





## The management is committed to:

1. Develop and improve the Quality Management System
2. Continually improve the effectiveness of the Quality Management System
3. The enhancement of customer satisfaction.

## The management has a continuing commitment to:

1. Work with customers to ensure that customer needs and expectations are determined and fulfilled with the aim of achieving customer satisfaction
2. Communicate throughout the Organisation the importance of meeting customer needs and legal requirements
3. Establish the Quality Policy and its objectives
4. Ensure that the management review meeting sets and reviews the quality objectives, and reports on the Internal audit results as a means of monitoring and measuring the processes and the effectiveness & suitability of the Quality Management System and objectives set.
5. Ensure the availability of fully trained and competent resources and provide training to continually improve the effectiveness of the Quality Management System.
6. Continuous monitoring quality performance and implementing improvements when appropriate.
7. Take into consideration the views of interested parties and the effect the companies activities have upon the environment.

Each employee will be made aware of the importance and contents of this quality policy and be encouraged to contribute to the success of the quality management system. The Company's goals and commitment in meeting the requirements of ISO 9001:2008 will secure a prosperous future and set a unique standard for others to follow

Ali Gurgoz  
General Manager







# CERTIFICATE

This is to Certify that the Management System of  
**GOMAG ENERGY MMC**  
AZ1073, BAKU YAMASAL, ALASGAR ALAKBAROV, E.79, M.40

has been audited and found to comply with the requirements of:

## ISO 9001:2015 (Quality Management System)

For the Scope of activities described below:  
**PROCUREMENT SERVICES; MANAGEMENT OF ENGINEERING,  
CONSTRUCTION PROJECTS IN OIL & GAS AND  
CONSTRUCTION INDUSTRIES**

Certificate No.: **TR95288A**

Date of initial registration	Date of this Certificate	Surv. audit on or before/ Certificate expiry	Recertification Due
23 December 2021	23 December 2021	22 December 2022	22 December 2024

Validity of this certificate is subject to successful completion of surveillance audit on or before due date, in case surveillance audit not conducted this certificate shall be suspended/cancelled.



  
**Director**



For verification and updated information concerning the present certificate visit to [www.lmscert.com](http://www.lmscert.com)  
This Certificate is the property of LMS Certification Limited and shall be returned immediately when demanded.




**LMS Certification Limited**  
 Labrynth Business Centre, 43 Middle Hill Gate, Stockport,  
 Great Manchester, England-SK1 3DG  
 Phone :+44 208 935 5094  
 Company No.: 11029176  
 Visit > [www.lmscert.com](http://www.lmscert.com)  
 E-mail > [info@lmscert.com](mailto:info@lmscert.com)



KAB-QC-71      LMS/FM001/Q/REV08



# CERTIFICATE

This is to Certify that the Management System of  
**GOMAG ENERGY MMC**  
AZ1073, BAKU YAMASAL, ALASGAR ALAKBAROV, E.79, M.40

has been audited and found to comply with the requirements of:

## ISO 45001:2018 (Occupational Health & Safety Management System)

For the Scope of activities described below:  
**PROCUREMENT SERVICES; MANAGEMENT OF ENGINEERING,  
CONSTRUCTION PROJECTS IN OIL & GAS AND  
CONSTRUCTION INDUSTRIES**

Certificate No.: **TR95288C-1**

Date of initial registration	Date of this Certificate	Surv. audit on or before/ Certificate expiry	Recertification Due
23 December 2021	23 December 2021	22 December 2022	22 December 2024

Validity of this certificate is subject to successful completion of surveillance audit on or before due date, in case surveillance audit not conducted this certificate shall be suspended/cancelled.



  
**Director**



For verification and updated information concerning the present certificate visit to [www.lmscert.com](http://www.lmscert.com)  
This Certificate is the property of LMS Certification Limited and shall be returned immediately when demanded.




**LMS Certification Limited**  
 Labrynth Business Centre, 43 Middle Hill Gate, Stockport,  
 Great Manchester, England-SK1 3DG  
 Phone :+44 208 935 5094  
 Company No.: 11029176  
 Visit > [www.lmscert.com](http://www.lmscert.com)  
 E-mail > [info@lmscert.com](mailto:info@lmscert.com)



KAB-OC-42      LMS/FM001/Q/REV08



# CERTIFICATE

This is to Certify that the Management System of  
**GOMAG ENERGY MMC**  
AZ1073, BAKU YAMASAL, ALASGAR ALAKBAROV, E.79, M.40

has been audited and found to comply with the requirements of:

## ISO 14001:2015 (Environmental Management System)

For the Scope of activities described below:  
**PROCUREMENT SERVICES; MANAGEMENT OF ENGINEERING,  
CONSTRUCTION PROJECTS IN OIL & GAS AND  
CONSTRUCTION INDUSTRIES**

Certificate No.: **TR95288B**

Date of initial registration	Date of this Certificate	Surv. audit on or before/ Certificate expiry	Recertification Due
23 December 2021	23 December 2021	22 December 2022	22 December 2024

Validity of this certificate is subject to successful completion of surveillance audit on or before due date, in case surveillance audit not conducted this certificate shall be suspended/cancelled.



  
**Director**



For verification and updated information concerning the present certificate visit to [www.lmscert.com](http://www.lmscert.com)  
This Certificate is the property of LMS Certification Limited and shall be returned immediately when demanded.




**LMS Certification Limited**  
 Labrynth Business Centre, 43 Middle Hill Gate, Stockport,  
 Great Manchester, England-SK1 3DG  
 Phone :+44 208 935 5094  
 Company No.: 11029176  
 Visit > [www.lmscert.com](http://www.lmscert.com)  
 E-mail > [info@lmscert.com](mailto:info@lmscert.com)



KAB-EC-63      LMS/FM001/Q/REV08





# LİSENZIYA

Qeydiyyat nömrəsi EL-46/2022 "2" Fevral 2022 il

Azərbaycan Respublikasının İqtisadiyyat Nazirliyi

(lisenziya verən orqanın adı)  
Bakı şəhəri, Nizami rayonu, Keşlə qəsəbəsi, Heydər Əliyev prospekti 155

(lisenziya verən orqanın ünvanı)  
Tikintisinə icazə tələb olunan bina və qurğuların

(lisenziya verilən fəaliyyət növü)  
tikinti-quraşdırma işlərini

\_\_\_\_\_ heyata keçirməyə icazə verir.

Lisenziya verilib **"GOMAG ENERGY" Məhdud Məsuliyyətli Cəmiyyətinə**

(hüquqi şəxs, xarici hüquqi şəxsin filialının və nümayəndəliyinin adı və ünvanı)  
Bakı şəhəri, Yasamal rayonu, Ələsgər Ələkbərov, ev 79, mənzil 40,

(hüquqi ünvanı, fərdi sahibkarın soyadı, adı, atasının adı və fəaliyyət ünvanı, VÖEN)  
VÖEN 1306473591

Lisenziyanı imzalayan vəzifəli şəxs **NİYAZİ SƏFƏROV**

(adı və soyadı)  
**NAZİR MÜAVİNİ**

Vəzifəsi \_\_\_\_\_

\_\_\_\_\_ (imza)

M.Y.



### LİSENZİYANIN ƏLAVƏSİ

Qeydiyyat nömrəsi EL-46/2022/1 "2" Fevral 2022 il

Azərbaycan Respublikasının İqtisadiyyat Nazirliyi (Bakı şəhəri, Nizami rayonu, Keşlə qəsəbəsi, Heydər Əliyev prospekti 155) tərəfindən "2" Fevral 2022 il tarixində EL-46/2022 qeydiyyat nömrəsi ilə verilmiş lisenziya əsasında "GOMAG ENERGY" Məhdud Məsuliyyətli Cəmiyyətinə (hüquqi ünvanı: Bakı şəhəri, Yasamal rayonu, Ələsgər Ələkbərov, ev 79, mənzil 40, VÖEN 1306473591) tikintisinə icazə tələb olunan bina və qurğuların tikinti-quraşdırma işləri fəaliyyəti üzrə görülməsinə icazə verilən işlərin

#### SİYAHISI

1. Xüsusi torpaq işləri:
  - 1.1. ankerlərin torpağa bərkidilməsi və binaların "torpaqda divar" üsulu ilə tikilməsi
  - 1.2. enmə quyularının və kessonların qurulması
  - 1.3. qazma-partlayış işləri və qaya torpaqlarının çıxarılması
2. Beton və dəmir-beton konstruksiyaların quraşdırılması
3. Metal konstruksiyaların quraşdırılması
4. Ağac konstruksiyaların quraşdırılması
5. Fasad işləri
6. Svay işləri
7. Mühəndis-kommunikasiya və şəbəkələrinin qurulması işləri
8. Hidrotexniki işlər:
  - 8.1. sualtı-texniki işlər
  - 8.2. dambaların (torpaq bəndlərin) tikintisi
  - 8.3. limanların tikintisi
  - 8.4. pirsələrin tikintisi
  - 8.5. sahilbərkitmə işləri
  - 8.6. su anbarları
9. Yol tikintisi:
  - 9.1. avtomobil yolları
  - 9.2. aerodromların uçuş-enmə zolaqları
  - 9.3. elektrik sənişin nəqliyyatı (tramvay, trolleybus və hava-kanat xətləri) yolları
  - 9.4. nəqliyyat tunelləri və metropolitenlər
  - 9.5. dəmiryol xətləri

10. Körpülərin, estakadaların və yol ötürücülərinin tikintisi
11. Xüsusi qurğuların tikintisi və quraşdırılması:
  - 11.1. radiorabitə, radio və televiziya qurğuları və qüllələr
  - 11.2. rezervuarlar və qazholderlər (qaz anbarları)
  - 11.3. elektrik ötürücü xətləri
12. Sənaye və mülki obyektlərin tikintisi:
  - 12.1. aşırımı 24 metrədək
  - 12.2. aşırımı 24 metr və daha çox
  - 12.3. hündürlüyü 65 metrədək
  - 12.4. hündürlüyü 65 metr və daha çox
  - 12.5. tutumu 5 min nəfərədək
  - 12.6. tutumu 5 min nəfər və daha çox

Azərbaycan Respublikası  
İqtisadiyyat nazirinin müavini



Niyazi Səfərov



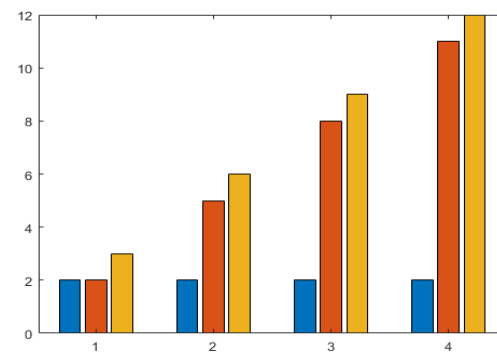




## PIPING DB SOFTWARE



Gomag Energy uses pipingdb program for data tracking, traceability, reporting, work schedule, work preparation, cost control, warehouse inventory tracking, personnel performance, accounting.



The program provides all the information requested by the customer instantly. The reports provided by the program provide great convenience in project delivery.



Delivery of project materials, job preparation, manufacturing, assembly, quality requirements, test, reinstatement, subsystem preparation, mechanical completion, handover steps are followed through the program. In this way, it reduces human mistakes and provides great convenience for employees.



SYNAPSE PMS

PROFESSIONAL DATA  
TRACKING





# S Y N A P S E P M S

- Synapse PMS program was designed to eliminate the problems experienced in pipe manufacturing and assembly works from past to present. Its main purpose is to minimize human-induced mistakes and to eliminate the working system dependent on individuals. All stages of pipe assembly works from manufacturing to handover are followed by the program and instant access to reliable information can be provided.

Material Delivery

Work Preparation

Fabrication and Assembly

Quality Control

Daily, Weekly, Monthly Reporting



# FABRICATION

- Received materials are entered into the system. Work preparation is made by program automatically. Thus, the work front is easily prepared. Isometries, whose manufacturing works are completed, are automatically deleted from the list and move on to the next stage.


Work Front																	Cutting	Hold	Under Fabrication
Excel		PDF		All MIR			All Material			All BoreType			All with J&C			Search:			
Isometric	MIR	Material	LB/SB	NS	PWHT	Jacket & Core	Work Prep.				Total: 1976	Total: 13	Total: 370.5	Total: 199	Remark	Actions			
							No	Cut By	Cut Date	Scope	Work Prep.	Not Cutted	Fitup	Weld					
4120-LLS4101653-3	TK01-MIR-0044	CS	LB	6	NO	JACKET	JC_CL_001	SE	06-10-2020	75	6	0	0	6		<a href="#">i</a>   <a href="#">e</a>			
4120-LLS4101410-3	TK01-MIR-0044	CS	LB	3	NO	JACKET	JC_CL_001	SE	06-10-2020	32	0	0	6	0		<a href="#">i</a>   <a href="#">e</a>			
4120-LLS4103811-4	TK01-MIR-0316	CS	LB	6	NO	JACKET	CL_SE_0001	SE	16-11-2020	116.25	0	0	0	114		<a href="#">i</a>   <a href="#">e</a>			
4110-LLS4103811-7	TK01-MIR-0793	CS	LB	6	NO	JACKET	CL_SE_0001	SE	16-11-2020	58.25	0	0	56.25	0		<a href="#">i</a>   <a href="#">e</a>			
4140-LLS4104106-7	TK01-MIR-0207	CS	LB	6	NO	JACKET	CL_SE_0001	SE	16-11-2020	47.5	0	0	0	12		<a href="#">i</a>   <a href="#">e</a>			
4120-LLS4103816-3	TK01-MIR-0426	CS	LB	3	NO	JACKET	GRK-003	GRK	11-09-2020	49	9	0	39	0		<a href="#">i</a>   <a href="#">e</a>			
4120-LLS4103816-5	TK01-MIR-0426	CS	LB	3	NO	JACKET	GRK-003	GRK	11-09-2020	28.5	0	0	28.5	0		<a href="#">i</a>   <a href="#">e</a>			
4120-LLS4101459-4	TK01-MIR-0426	CS	LB	3	NO	JACKET	GRK-003	GRK	11-09-2020	58.5	0	0	57	0		<a href="#">i</a>   <a href="#">e</a>			
4120-LLS4104010-3	TK01-MIR-0426	CS	LB	3	NO	JACKET	GRK-003	GRK	11-09-2020	51	0	0	48	0		<a href="#">i</a>   <a href="#">e</a>			
4120-LLS4103902-7	TK01-MIR-0052	CS	LB	3	NO	JACKET	GRK-003	D.YEKLITAS	28-03-2020	37	0	0	36	0		<a href="#">i</a>   <a href="#">e</a>			

Show 10 entries      Showing 1 to 10 of 66 entries      Previous 1 2 3 4 5 6 7 Next



# CUTTING PLAN

- Pipe cutting plan adjusting before manufacturing in order to avoid any material scrap.


			PIPE CUTTING FORM				INCH	6	FORM NO	C31
							IDENTITY	I133019	TARİH	20.05.2021
Pipe Length	Trash	ABC	CUTTING PLAN							
11440	56	A	10029x1 (4420-SSW4401008-1)	1198x1 (5630-P5602001-2)	157x1 (5620-P5602608-2)					
11760	58	B	7620x1 (5630-P5601102-2)	3279x1 (5630-P5601102-2)	700x1 (5620-P5602804-1)	103x1 (5620-LF5602602-2)				
11510	56	C	7163x1 (5630-MSC5601806-3)	3185x1 (5630-MSC5601806-2)	1106x1 (5630-P5600605-3)					
11720	54	D	6918x1 (5620-P5602601-4)	3155x1 (4120-LS4101404-4)	1593x1 (5930-FW5910301-1)					
11740	55	E	6692x1 (4420-SSW4401008-1)	4758x1 (5630-MSC5601806-3)	235x1 (5630-CWR5601508-2)					
11630	59	F	5091x1 (5630-MSC5601806-2)	3155x1 (4120-LS4101454-4)	2783x1 (5630-P5600605-2)	542x1 (5630-P5600605-2)				
11720	60	G	2761x1 (5930-FW5901205-1)	2740x1 (5630-P5600605-3)	2424x1 (4120-LS4101404-4)	2424x1 (4120-LS4101454-4)	1167x1 (5630-CWR5601508-2)	144x1 (5620-P5602601-3)		
11660	61	H	2299x1 (5620-LF5602602-2)	2186x1 (4420-SSW4401008-1)	2078x1 (5630-P5602002-1)	2078x1 (5630-P5602002-2)	2078x1 (5630-P5602002-3)	880x1 (5630-CWR5601508-1)		
11470	89	I	2078x1 (5630-P5602002-4)	2078x1 (5630-P5602002-5)	2078x1 (5630-P5602002-6)	2078x1 (5630-P5602002-7)	2078x1 (5630-P5602002-8)	991x1 (5630-CWR5601507-1)		
11730	61	J	2078x1 (5630-P5602002-9)	2062x1 (5620-P5602601-3)	2062x1 (5620-P5602604-1)	1978x1 (4120-LS4101404-4)	1978x1 (4120-LS4101454-4)	1511x1 (5630-CWR5601507-1)		
11740	66	K	1948x1 (5630-P5601001-5)	1889x1 (5620-P5602608-3)	1866x1 (5620-P5602604-2)	1683x1 (5930-FW5901205-1)	1645x1 (5930-FW5901213-1)	1523x1 (5620-P5602604-2)		
11740	66	K	1120x1 (5620-P5602604-1)							
11700	71	L	1507x1 (5930-FW5901213-1)	1372x1 (5630-P5601101-2)	1160x1 (5630-P5601102-2)	1145x1 (5620-LF5602601-2)	1145x1 (5630-P5600605-3)	1118x1 (5620-P5602608-2)		
11700	71	L	1042x1 (5630-CWR5601507-1)	942x1 (5630-MSC5601806-3)	941x1 (5620-LF5602601-2)	933x1 (5630-P5602001-2)	324x1 (5620-P5602601-4)			
11700	129	M	920x1 (5620-P5602601-4)	883x1 (5620-P5602601-1)	819x1 (5620-P5602601-4)	689x1 (5630-MSC5601806-2)	646x1 (5620-LF5602601-2)	646x1 (5620-LF5602602-2)		
11700	129	M	638x1 (5620-LF5602602-2)	622x1 (5630-P5601201-3)	600x1 (5620-P5602608-3)	561x1 (5620-P5601901-6)	548x1 (5620-P5602608-3)	542x1 (5630-P5600605-3)		
11700	129	M	529x1 (4420-SSW4401008-1)	505x1 (4120-LS4101404-2)	495x1 (5620-P5602608-2)	492x1 (4120-LS4101454-2)	491x1 (4120-LS4101454-2)	479x1 (4120-LS4101404-2)		
11700	129	M	466x1 (5630-P5600605-2)							
11730	3334	N	438x1 (5620-LF5602601-2)	425x1 (4120-LS4101404-2)	408x1 (5930-FW5901205-1)	388x1 (5620-P5602604-2)	336x1 (4120-LS4101454-2)	320x1 (5930-FW5901205-1)		
11730	3334	N	319x1 (5620-P5602601-1)	318x1 (5630-CWR5601508-1)	310x1 (5630-CWR5600501-2)	303x1 (5630-P5602001-5)	300x1 (4120-LS4101404-2)	300x1 (4120-LS4101454-2)		
11730	3334	N	293x1 (5930-FW5901213-1)	293x1 (5930-FW5910301-1)	270x1 (4120-LS4101404-4)	270x1 (4120-LS4101454-4)	218x1 (5620-LF5602601-2)	211x1 (5630-P5602002-9)		
11730	3334	N	210x1 (5630-P5602002-1)	210x1 (5630-P5602002-2)	210x1 (5630-P5602002-3)	210x1 (5630-P5602002-4)	210x1 (5630-P5602002-5)	210x1 (5630-P5602002-6)		
11730	3334	N	210x1 (5630-P5602002-7)	210x1 (5630-P5602002-8)	202x1 (5620-P5602606-2)	202x1 (5620-P5602608-2)	200x1 (5620-P5602606-1)	200x1 (5620-P5602608-1)		
11730	3334	N	192x1 (5620-LF5602602-2)							

\*Acceptable extension for site adjustment is not more than 100mm



# REPORTING

- The data operator reports the work done by using a phone or tablet. The reports are recorded in the database. Thus, all users can see the reports instantly. Since reporting is multiple choice, mistakes that the reporter can make are minimized.

 Search Isometric

4110  DM4120001  2

Spool No	Joint No	Fitter No	Welder No 1	Welder No 2	WPS No	Item1	Heat No 1	Item2	Heat No 2	Size
SPL-01	S2	Elsan Qocayev	Hüseyin Hüseynov	Select Welder <input type="text"/>	WPS-007	I2259134	39929	I2257928	10363	3
SPL-01	S3	Elsan Qocayev	Hüseyin Hüseynov	Select Welder <input type="text"/>	WPS-007	I2257928	10363	I2259146	39929	3
SPL-01	S4	Elsan Qocayev	Hüseyin Hüseynov	Select Welder <input type="text"/>	WPS-007	I2259146	39929	I2260689	521033	3
SPL-02	S5	Elsan Qocayev	Akif Seferov	Select Welder <input type="text"/>	WPS-007	I2260689	521033	I2257928	10363	3
SPL-02	S6	Elsan Qocayev	Akif Seferov	Select Welder <input type="text"/>	WPS-007	I2257928	10363	I2259328	38867	3
SPL-02	S8	Elsan Qocayev	Akif Seferov	Select Welder <input type="text"/>	WPS-007	I2259328	38867	I2257928	10363	3

Update



# SPOOL TRACKING

<span>Excel</span> <span>PDF</span> <span>Columns</span> <span style="float: right;">All Material</span>												
Isometric	Total: 32782					Total: 19105	Total: 19083	Total: 27751	Total: 28724	Total: 23237	Total: 17360	Total: 13266
SPOOLNo	Material	LB&SB	SpoolType	NS	Fit-up	Weld	RFI No	Spool Release	Painted	Site	Erected	
5220-LF5200112-2	SPL-01	AG Carbon Steel	LB	SHOP_WELDED	8	03-02-2021	06-03-2021	301XH01582	16-03-2021	01-04-2021	31-03-2021	
2001-P0020004-3	SPL-05	AG LTCS	LB	STRAIGHT_PIPE	3			301XH00158	20-11-2019	08-01-2020	31-01-2020	29-05-2020
2001-P0020007-3	SPL-10	AG Carbon Steel	LB	STRAIGHT_PIPE	4			301XH00158	20-11-2019	09-01-2020	31-01-2020	28-02-2020
2001-P0020007-3	SPL-11	AG Carbon Steel	LB	STRAIGHT_PIPE	4			301XH00158	20-11-2019	09-01-2020	31-01-2020	27-02-2020
2001-P0020004-3	SPL-12	AG LTCS	LB	STRAIGHT_PIPE	3			301XH00158	20-11-2019	08-01-2020	31-01-2020	24-02-2020
2001-P0020007-3	SPL-09	AG Carbon Steel	LB	STRAIGHT_PIPE	4			301XH00158	20-11-2019	09-01-2020	31-01-2020	23-05-2020
2001-P0020007-3	SPL-05	AG Carbon Steel	LB	STRAIGHT_PIPE	4			301XH00158	20-11-2019	09-01-2020	31-01-2020	18-05-2020
2001-P0020007-3	SPL-01	AG Carbon Steel	LB	SHOP_WELDED	4	26-07-2019	26-07-2019	301XH00168	29-11-2019	09-01-2020	31-01-2020	15-02-2020
2001-P0020007-3	SPL-02	AG Carbon Steel	LB	SHOP_WELDED	4	26-07-2019	26-07-2019	301XH00168	29-11-2019	09-01-2020	31-01-2020	14-02-2020
2001-P0020007-3	SPL-03	AG Carbon Steel	LB	SHOP_WELDED	4	26-07-2019	26-07-2019	301XH00168	29-11-2019	09-01-2020	31-01-2020	14-02-2020
2001-P0020007-3	SPL-14	AG Carbon Steel	LB	STRAIGHT_PIPE	4			301XH01458	10-03-2021		31-01-2020	12-06-2020
2001-P0020004-3	SPL-10	AG LTCS	LB	STRAIGHT_PIPE	3			301XH00158	20-11-2019	08-01-2020	31-01-2020	11-06-2020
2001-P0020004-3	SPL-09	AG LTCS	LB	STRAIGHT_PIPE	3			301XH00158	20-11-2019	08-01-2020	31-01-2020	10-06-2020
2001-P0020007-3	SPL-08	AG Carbon Steel	LB	STRAIGHT_PIPE	4			301XH00158	20-11-2019	09-01-2020	31-01-2020	10-06-2020
2001-P0020007-3	SPL-15	AG Carbon Steel	LB	STRAIGHT_PIPE	4			301XH01458	10-03-2021	09-01-2020	31-01-2020	10-06-2020
2001-P0020007-3	SPL-06	AG Carbon Steel	LB	STRAIGHT_PIPE	4			301XH00158	20-11-2019	09-01-2020	31-01-2020	06-05-2020
2001-P0020007-3	SPL-07	AG Carbon Steel	LB	STRAIGHT_PIPE	4			301XH00158	20-11-2019	09-01-2020	31-01-2020	06-05-2020
2001-P0020004-3	SPL-06	AG LTCS	LB	STRAIGHT_PIPE	3			301XH00158	20-11-2019	08-01-2020	31-01-2020	04-05-2020

- With reporting, spools are defined in the system and the process of those spools begins. The process from manufacturing to assembly is followed by a Spool Tracking Database.



# SPOOL TRACKING BY UNIT

Spools are easily tracked by their units and their stages are monitored.

IC Piperack (Unit:20) Sulphur Recovery (Unit:41) Sour Water Stripper (Unit:44) Utilities Of Site Phase (Unit:46) C4 Hydrogenation (Unit:52) Gasoline Phase (Unit:56) LPG Storage (Unit:59) Pivot																	
2001 2002 2003 2004 2005 Pivot Request																	
<span>Excel</span> <span>PDF</span> <span style="float: right;">All Materials <input type="text"/> Search: <input type="text"/></span>																	
Isometric	Material	NS	SPL-01	SPL-02	SPL-03	SPL-04	SPL-05	SPL-06	SPL-07	SPL-08	SPL-09	SPL-10	SPL-11	SPL-12	SPL-13	SPL-14	
2001-AF0020401-1	AG CS	20	W-WELD COMP.	S-RELEASED	W-WELD COMP.	W-RELEASED	W-RELEASED	W-RELEASED	S-RELEASED	W-RELEASED	W-RELEASED						
2001-AF0020401-2	AG CS	14	S-RELEASED	S-RELEASED	S-RELEASED	W-WELD COMP.	W-WELD COMP.	W-RELEASED	W-RELEASED								
2001-AF0020401-3	AG CS	14	W-WELD COMP.	W-WELD COMP.	W-RELEASED	W-RELEASED	S-RELEASED										
2001-AF0020401-4	AG CS	14	W-RELEASED	W-RELEASED	W-RELEASED	W-RELEASED	S-RELEASED	S-RELEASED	W-WELD COMP.	S-RELEASED							
2001-AF0020402-1	AG CS	10	W-ERECTED	W-ERECTED	S-ERECTED	S-ERECTED	S-ERECTED										
2001-AG0020401-1	AG CS	6	W-ERECTED	S-ERECTED	S-ERECTED												
2001-AG0020401-2	AG CS	6	S-ERECTED	S-ERECTED	S-ERECTED	S-ERECTED	S-ERECTED	S-ERECTED	S-ERECTED	S-ERECTED	S-ERECTED	S-ERECTED	S-ERECTED				
2001-AG0020401-3	AG CS	6	W-ERECTED	S-ERECTED													
2001-AG0020402-1	AG CS	6	W-ERECTED	S-ERECTED	S-ERECTED												
2001-AG0020402-2	AG CS	6	S-ERECTED	S-ERECTED	S-ERECTED	S-ERECTED	S-ERECTED	S-ERECTED	S-ERECTED	S-ERECTED	S-ERECTED	S-ERECTED					
2001-AG0020402-3	AG CS	6	W-ERECTED	S-ERECTED													
2001-CWR0020201-1	AG CS	16	W-ERECTED	S-ERECTED	S-ERECTED	S-ERECTED	S-ERECTED										
2001-CWR0020201-2	AG CS	16	W-ERECTED	W-ERECTED	W-ERECTED	W-ERECTED	S-ERECTED	S-ERECTED									
2001-CWR0020201-3	AG CS	16	W-ERECTED	S-ERECTED	S-ERECTED	S-ERECTED	S-ERECTED	S-ERECTED	S-ERECTED								
2001-CWR0020201-4	AG CS	16	W-ERECTED	S-ERECTED	S-ERECTED	W-ERECTED											
2001-CWR0020201-5	AG CS	10	W-ERECTED	S-ERECTED	S-ERECTED	S-ERECTED	S-ERECTED	W-ERECTED		W-ERECTED							
2001-CWR0020202-1	AG CS	8	W-ERECTED	S-ERECTED	S-ERECTED												
2001-CWR0020203-1	AG CS	14	W-ERECTED	S-ERECTED	S-ERECTED												
2001-CWR0020204-1	AG CS	10	W-ERECTED	W-ERECTED	W-ERECTED	S-ERECTED											
2001-CWS0020201-1	AG CS	16	W-ERECTED	S-ERECTED	S-ERECTED	S-ERECTED	S-ERECTED	S-ERECTED	S-ERECTED								
2001-CWS0020201-2	AG CS	16	S-ERECTED	S-ERECTED	W-ERECTED	W-ERECTED	W-ERECTED	W-ERECTED									
2001-CWS0020201-3	AG CS	16	W-ERECTED	S-ERECTED	S-ERECTED	S-ERECTED	S-ERECTED	S-ERECTED	S-ERECTED								
2001-CWS0020201-4	AG CS	16	W-ERECTED	S-ERECTED	S-ERECTED	W-ERECTED	S-ERECTED										



# SPOOL REQUEST TO PAINT AND SITE

IC Piperack (Unit:20)					Sulphur Recovery (Unit:41)					Sour Water Stripper (Unit:44)					Utilities Of Site Phase (Unit:46)					C4 Hydrog														
2001					2002					2003					2004					2005					Pivot					Request				
Excel		PDF		Search:																														
Isometric	SpoolNo	Size	Status	Laydown	Request																													
2001-PA0020301-1	SPL-03	4	W-PAINTED	BABEK	Make Request																													
2001-PA0020301-1	SPL-06	4	W-PAINTED	BABEK	Make Request																													
2001-PA0020301-1	SPL-07	4	W-PAINTED	BABEK	Make Request																													
2001-PA0020301-1	SPL-02	4	W-PAINTED	BABEK	Make Request																													
2001-PA0020301-1	SPL-01	4	W-PAINTED	SUPPORT	Make Request																													
2001-PA0020301-1	SPL-04	4	W-PAINTED	SUPPORT	Make Request																													
2001-PA0020301-1	SPL-05	4	W-PAINTED	BABEK	Make Request																													
2001-PA0020301-2	SPL-03	4	W-RELEASED	SUPPORT	Make Request																													
2001-PA0020301-2	SPL-02	4	W-RELEASED	SUPPORT	Make Request																													
2001-PA0020301-2	SPL-06	4	W-RELEASED	SUPPORT	Make Request																													
2001-PA0020301-2	SPL-07	4	W-RELEASED	SUPPORT	Make Request																													
2001-PA0020301-2	SPL-04	4	W-RELEASED	SUPPORT	Make Request																													
2001-PA0020301-2	SPL-05	4	W-RELEASED	SUPPORT	Make Request																													
2001-PA0020301-2	SPL-08	4	W-RELEASED	SUPPORT	Make Request																													
2001-PA0020301-2	SPL-01	4	W-RELEASED	SUPPORT	Make Request																													
2001-PA0020301-3	SPL-04	4	W-RELEASED	SUPPORT	Make Request																													

Spools are requested by the authorities. The requested spools are registered on the transport page. Transport group carries the requested spools to the required places. Transported spools are deleted from the list. Thus, work organization can be done easily without mail traffic.

# ASSEMBLY

- The works that can be done from the spools whose transport is completed are shown automatically by the system.

Total: 329.75						
Isometric	JointNo	Size	Fitup	Weld	Conn. 1 Status	Conn. 2 Status
4620-FG4600104-1	F19	2			4620-FG4600104-1-SPL-09 - SITE	4620-FG4600104-1-SPL-09 - SITE
4620-FG4600107-1	F11	6			4620-FG4600107-1-SPL-04 - ERECTED	4620-FG4600107-1-SPL-05 - SITE
4620-FG4600107-1	F12	6			4620-FG4600107-1-SPL-05 - SITE	4620-FG4600107-1-SPL-05 - SITE
4620-FG4600107-3	F1	6			4620-FG4600107-3-SPL-01 - SITE	4620-FG4600107-1-SPL-05 - SITE
4620-FG4600107-3	F8	6			4620-FG4600107-3-SPL-02 - SITE	4620-FG4600107-3-SPL-02 - SITE
4620-FG4620001-1	F1	8			4620-FG4620001-1-SPL-01 - SITE	4620-FG4620001-2-SPL-01 - SITE
4620-FG4620001-2	F2	8			4620-FG4620001-2-SPL-01 - SITE	4620-FG4620001-2-SPL-02 - SITE
4620-FG4620001-2	F3	8			4620-FG4620001-2-SPL-02 - SITE	4620-FG4620001-2-SPL-02 - SITE
4620-FG4620001-2	F13	8			4620-FG4620001-2-SPL-04 - SITE	4620-FG4620001-2-SPL-05 - SITE
4620-FG4620001-2	F18	8			4620-FG4620001-2-SPL-05 - SITE	4620-FG4620001-3-SPL-02 - ERECTED
4620-FW4600150-1	F2	4			4620-FW4600150-1-SPL-01 - SITE	4620-FW4600150-1-SPL-01 - SITE



# REPORTING IN ASSEMBLY

- The welds, supports, flange connections made are entered into the system by the operators.

Search Isometric

4120 P4102505 2

Piping Support Flange

Spool No	Joint No	Fitter No	Welder No 1	Welder No 2	WPS No	Item1	Heat No 1	Item2	Heat No 2	Size
SPL-01	F1	Mehmet Kul	Ramil Baxisov	Faik Kardaşov	WPS-002	I129125	964123	I132907	986649	20
SPL-01	F5	Select Fitter	Select Welder	Select Welder	WPS No	41-FE-3018	Heat No 1	I132907	Heat No 2	0,5
SPL-01	F6	Select Fitter	Select Welder	Select Welder	WPS No	41-FE-3018	Heat No 1	I132907	Heat No 2	0,5
SPL-01	F7	Select Fitter	Select Welder	Select Welder	WPS No	41-FE-3018	Heat No 1	I132907	Heat No 2	0,5
SPL-01	F8	Select Fitter	Select Welder	Select Welder	WPS No	41-FE-3018	Heat No 1	I132907	Heat No 2	0,5
SPL-02	F10	TL1-Rahman Cavadzade	Ramil Babayev	Berk Ertugrul	WPS-002	I4067799	620503	I132907	985933	20
SPL-02	F12	TL6-Erdem Akyıldız	Faik Kardaşov	Select Welder	WPS-002	I225067	971991	I132907	985933	10
SPL-01	SP1	TL8-Erkan Yalçınkaya	Select Welder	Select Welder	WPS No	I132907	Heat No 1	5203	Heat No 2	20
SPL-02	SP2	TL9-Mehmet Kul	Select Welder	Select Welder	WPS No	I132907	Heat No 1	5202	Heat No 2	20
SPL-02	SP3	TL10-Fuad Hüseyinli	Select Welder	Select Welder	WPS No	I132907	Heat No 1	5201	Heat No 2	20
		TL11-Cefer Ceferov								
		TL12-Hasan Yıldırım								
		TL14-Yusuf Karakuş								
		TL15-Qabil Zeynalli								
		TL16-Şahmar Alakbarov								
		TL17-Volkan Ekinci								
		TL18-Recep Karaboğa								
		TL19-Murat Bozkurt								
		TL20-Hüseyin Şahin								
		TL21-Ulvi İsmayilov								
		TL23-Musa Aliyev								
		TL24-Elnur Aslanov								
		TL25-Recep Levent Yılmaz								
		TL26-İbrahim Demir								

Update

# REPORTING IN ASSEMBLY





# REPORTING IN ASSEMBLY

- While reporting, progress follow-up is done instantly. Users can reach reports 7-24 by using phone, computer tablet.

Fabrication Fitup
Erection Fitup
Area Fabrication Fitup
Area Erection Fitup

Excel PDF
Search:

	Daily: 580.25	Yesterday: 765.25	Weekly: 3239.25	Monthly: 10798	Overall: 147733.5
Material	Daily	Yesterday	Weekly	Monthly	Overall
AG CS Large Bore >= 2"	269.25	379.25	1778	7110	65162.5
AG CS Small Bore < 2"	107.25	231.5	796.75	2399.5	30907.25
AG GALV (Threaded & Groved) Large Bore >= 2"	151	122	480.75	594.75	13337.5
AG GALV (Threaded & Groved) Small Bore < 2"	1	0	1	13	5783.75
AG SS Large Bore >= 2"	5	2	10.75	183.5	6636.75
AG SS Small Bore < 2"	46.75	6.5	84	261.25	10669.75
UG Carbon Steel	0	24	88	236	15236

Fabrication Weld
Erection Weld
Area Fabrication Weld
Area Erection Weld

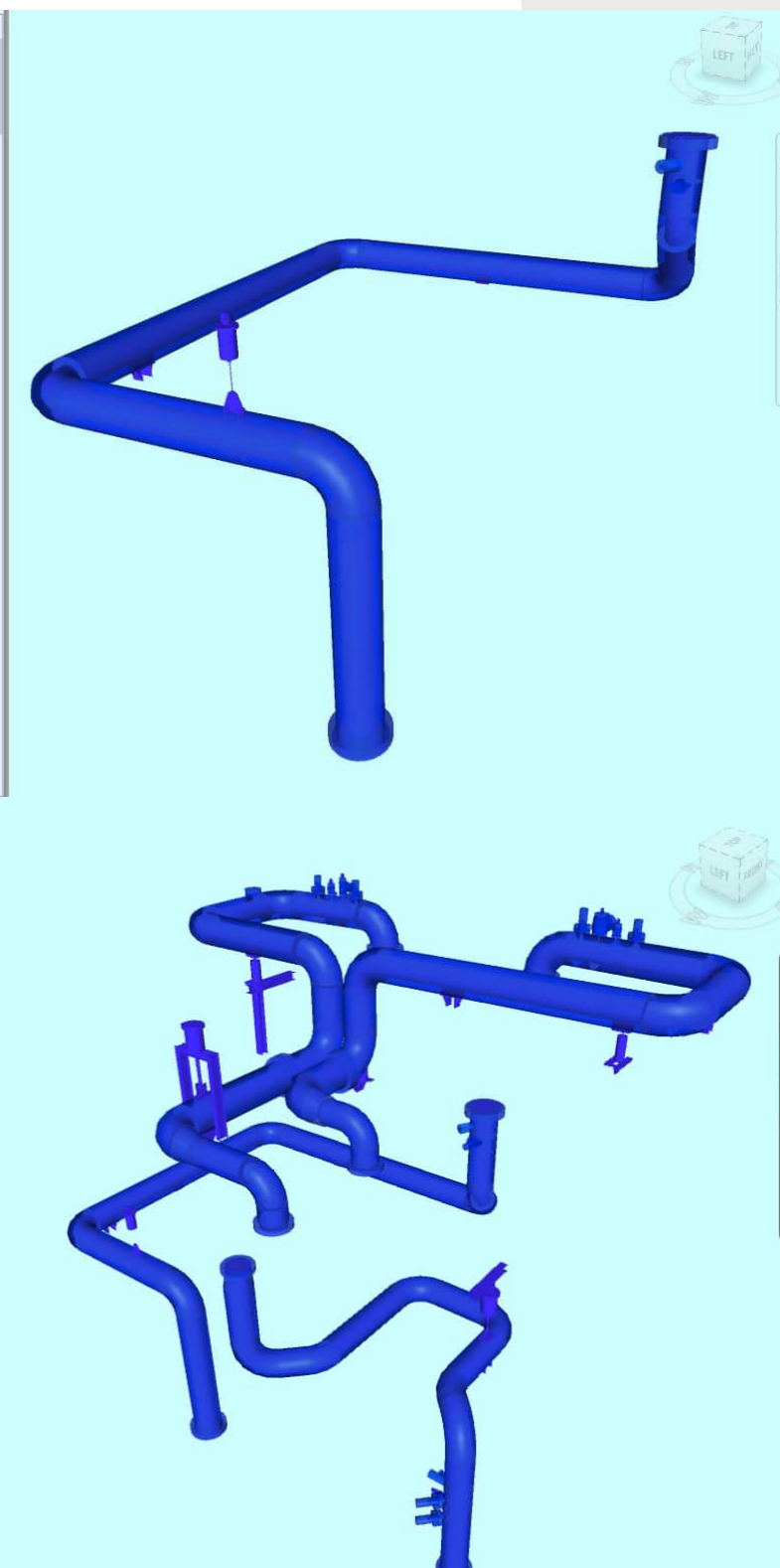
Excel PDF
Search:

	Daily: 581.25	Yesterday: 652.75	Weekly: 3174	Monthly: 11125.25	Overall: 146970.75
Material	Daily	Yesterday	Weekly	Monthly	Overall
AG CS Large Bore >= 2"	207	312.25	1707	6998.25	64741.5
AG CS Small Bore < 2"	183.75	175.25	784.5	2595.25	30679
AG GALV (Welded) Large Bore >= 2"	136	122	465.75	579.75	13280.5
AG GALV (Welded) Small Bore < 2"	1	0	1	13	5782.25
AG SS Large Bore >= 2"	6.75	4	13.75	185	6614.5
AG SS Small Bore < 2"	46.75	15.25	86	438	10653
UG Carbon Steel	0	24	116	316	15220

# TEST PACKAGE TRACKING

- Test packages defined in the system and their detailed follow-up is done by Test Package Tracking. All information about packages is taken from the database and displayed. 3D code is generated to see test packages visually better. Planning is made by setting target dates.

0142_TP-AG-41-U-07-01-001
0143_TP-AG-41-U-10-01-001
0144_TP-AG-41-U-12-01-001
0145_TP-AG-41-U-12-01-002
0146_TP-AG-41-P-07-01-001
0147_TP-AG-41-P-14-01-001
0148_TP-AG-41-P-14-01-002
0149_TP-AG-41-P-03-01-001
0150_TP-AG-41-P-03-01-002
0151_TP-AG-41-P-03-01-003
0152_TP-AG-41-P-03-01-004
0153_TP-AG-41-P-03-01-005
0154_TP-AG-41-P-03-01-006
0155_TP-AG-41-P-03-01-007
0156_TP-AG-41-P-11-01-001
0157_TP-AG-41-P-11-01-002
0158_TP-AG-41-P-11-01-003
0159_TP-AG-41-P-11-01-004
0160_TP-AG-41-P-11-01-005
0161_TP-AG-41-P-11-01-006
0162_TP-AG-41-P-11-01-007
0163_TP-AG-41-P-12-01-001
0164_TP-AG-41-P-12-01-002
0165_TP-AG-41-P-02-01-001
0166_TP-AG-41-P-01-01-001
0168_TP-AG-41-P-10-01-001
0169_TP-AG-41-U-25-01-001
0170_TP-AG-41-P-06-01-001
0171_TP-AG-41-P-12-01-003
0172_TP-AG-41-P-12-01-004
0173_TP-AG-41-P-12-01-005
0174_TP-AG-41-U-25-01-002
0175_TP-AG-41-P-13-01-001
0176_TP-AG-41-P-13-01-002
0177_TP-AG-41-U-25-01-003
0178_TP-AG-41-P-13-01-003
0179_TP-AG-41-P-13-01-004
0180_TP-AG-41-P-06-01-002
0181_TP-AG-41-P-06-01-003
0182_TP-AG-41-P-06-01-004
0183_TP-AG-41-P-06-01-005
0184_TP-AG-41-U-09-01-001
0185_TP-AG-41-U-05-01-001



0142_TP-AG-41-U-07-01-001
0143_TP-AG-41-U-10-01-001
0144_TP-AG-41-U-12-01-001
0145_TP-AG-41-U-12-01-002
0146_TP-AG-41-P-07-01-001
0147_TP-AG-41-P-14-01-001
0148_TP-AG-41-P-14-01-002
0149_TP-AG-41-P-03-01-001
0150_TP-AG-41-P-03-01-002
0151_TP-AG-41-P-03-01-003
0152_TP-AG-41-P-03-01-004
0153_TP-AG-41-P-03-01-005
0154_TP-AG-41-P-03-01-006
0155_TP-AG-41-P-03-01-007
0156_TP-AG-41-P-11-01-001
0157_TP-AG-41-P-11-01-002
0158_TP-AG-41-P-11-01-003
0159_TP-AG-41-P-11-01-004
0160_TP-AG-41-P-11-01-005
0161_TP-AG-41-P-11-01-006
0162_TP-AG-41-P-11-01-007
0163_TP-AG-41-P-12-01-001
0164_TP-AG-41-P-12-01-002
0165_TP-AG-41-P-02-01-001
0166_TP-AG-41-P-01-01-001
0168_TP-AG-41-P-10-01-001
0169_TP-AG-41-U-25-01-001
0170_TP-AG-41-P-06-01-001
0171_TP-AG-41-P-12-01-003
0172_TP-AG-41-P-12-01-004
0173_TP-AG-41-P-12-01-005
0174_TP-AG-41-U-25-01-002
0175_TP-AG-41-P-13-01-001
0176_TP-AG-41-P-13-01-002
0177_TP-AG-41-U-25-01-003
0178_TP-AG-41-P-13-01-003
0179_TP-AG-41-P-13-01-004
0180_TP-AG-41-P-06-01-002
0181_TP-AG-41-P-06-01-003

TP Number	TP Area	Iso Count	MIR Status	Scope	Completed	Balance	Percent	Responsibility	Target Date	Ready For WD	All Punch Comp.	WD Comp.	Ready For Test	Test Date	Reinstatement	Hold Status
TP-AG-00-U-10-01-002	4620	2	i	3.75	3.75	0	100%	G.Senturk - C.Bastimur	31-03-2021	31-03-2021	31-03-2021	15-04-2021				NO
TP-AG-41-U-25-01-018	4130	1	i	3.75	3.75	0	100%	S.Polat	31-03-2021	31-03-2021	01-04-2021	07-04-2021	08-04-2021	14-04-2021		NO
TP-AG-46-U-10-01-005	4620	4	i	8.25	8.25	0	100%	G.Senturk - C.Bastimur	31-03-2021	30-03-2021	30-03-2021	15-04-2021				NO
TP-AG-41-P-06-01-006	4120	2	i	58.25	52.25	6	90%	M.Akyildiz	31-03-2021	30-03-2021	13-04-2021	14-04-2021	14-04-2021			NO
TP-AG-41-P-05-01-027	4130	1	i	30.75	30.75	0	100%	S.Polat	31-03-2021	30-03-2021	01-04-2021	14-04-2021	15-04-2021			NO
TP-AG-41-P-06-01-007	4120	1	i	4	4	0	100%	M.Akyildiz	31-03-2021	30-03-2021	01-04-2021	07-04-2021	07-04-2021	14-04-2021		NO
TP-AG-46-U-12-01-002	4620	2	i	34.5	34.5	0	100%	G.Senturk - C.Bastimur	15-02-2021	29-03-2021	29-03-2021	13-04-2021	15-04-2021			NO
TP-AG-41-U-25-01-017	4130	1	i	4	4	0	100%	D.Yekilitas - S.Polat	28-03-2021	28-03-2021	30-03-2021	08-04-2021	10-04-2021	14-04-2021		NO
TP-AG-41-U-25-01-014	4120	1	i	4	4	0	100%	D.Yekilitas - M.Akyildiz	28-03-2021	28-03-2021	30-03-2021	07-04-2021	08-04-2021	14-04-2021		NO
TP-AG-44-P-05-01-003	4420	3	i	119.25	119.25	0	100%	D.Kocamis - R.Karaboga	26-03-2021	26-03-2021	13-04-2021	15-04-2021	21-04-2021			NO
TP-AG-44-P-05-01-004	4420	2	i	72	72	0	100%	D.Kocamis - R.Karaboga	26-03-2021	26-03-2021	13-04-2021					NO
TP-AG-41-U-02-01-002	4130	3	i	86.75	76.75	10	88%	M.Akyildiz	23-04-2021	23-04-2021						NO
TP-AG-41-U-02-01-003	4130	3	i	78.75	67.75	11	86%	M.Akyildiz	23-04-2021	23-04-2021						NO
TP-AG-41-P-04-01-021	4140	2	i	32	24	8	75%	AZIZ YILAN	23-04-2021	23-04-2021						NO
TP-AG-00-P-03-01-001	2001-2004-4110	4	i	94	89	5	95%	S.Polat	15-04-2021	23-04-2021						NO
TP-AG-41-P-13-01-002	4120	4	i	315	275.25	39.75	87%	M.Akyildiz-AKINCAN	15-04-2021	23-04-2021						NO
TP-AG-00-P-02-01-003	2001-2004-4110	4	i	85.5	85.5	0	100%	D.Kocamis - R.Karaboga	15-04-2021	23-04-2021						NO
TP-AG-41-P-12-01-002	4120	2	i	160.5	118.5	42	74%	M.Akyildiz-AKINCAN	15-04-2021	23-04-2021						NO
TP-AG-41-P-02-01-005	4120	2	i	295.75	271.5	24.25	92%	M.Akyildiz	15-04-2021	23-04-2021						NO
TP-AG-00-U-02-01-003	2001-2002-2003-2004-4110-4410-5610-5910	26	i	1818.75	1772.25	46.5	97%	E.Bayramov - S.Polat	15-03-2021	23-02-2021	23-02-2021	26-03-2021	13-04-2021			NO
TP-AG-00-U-02-01-002	2001-2002-2003-2004-4110-4410-5610-5640-5910	25	i	1633.5	1590	43.5	97%	E.Bayramov - S.Polat	15-02-2021	23-02-2021	23-02-2021	02-04-2021	13-04-2021			NO
TP-AG-00-U-03-01-001	2001-2003-2004-4110-4410-5610	13	i	573.75	573.75	0	100%	D.Kocamis - R.Karaboga	15-02-2021	23-02-2021	23-02-2021	10-03-2021	24-03-2021			NO
TP-AG-41-P-14-01-005	4130	20	i	625	604	21	97%	D.Kocamis - R.Karaboga	15-04-2021	22-04-2021						NO
TP-AG-00-P-02-01-001	4620	1	i	36.75	36.75	0	100%	G.Senturk - C.Bastimur	15-02-2021	22-02-2021	04-03-2021	25-03-2021	13-04-2021			NO



Fitter Performance Fitter Joint Performance **Welder Performance**

Excel PDF

Welder	WelderId	Total: 561.25		Total: 3480.5	
		Daily	Weekly	AvgWeekly	
W86	Famil Tagiyev	30.25	84.25	21.06	
W117	Babek Sultanlı	29.75	110.25	22.05	
W85	Elsan Ferzaliyev	28.5	59	14.75	
W42	Sancar Kılınc	28	84	28	
W208	Ümit Esmek	28	84	28	
W232	Etibar Ramazanov	28	32	16	
W222	Ruslan Balayev	25.75	176.75	35.35	
W30	Taha Kaygısız	25.5	59	11.8	
W43	Serhan Söker	24	24	24	
W59	Sabir Abiyev	20	60	15	
W188	Emirov İnqılab	20	69.75	34.88	
W45	Reşad Aliyev	15	35	11.67	
W65	Rövşen Cebrailov	15	54.75	13.69	
W114	Hasanqulu Qurbanov	15	75.75	18.94	
W203	Qocayev Vusal	14.25	65	13	
W119	Nail Aliyev	14	118.75	23.75	
W121	Akif Seferov	14	64.25	32.13	
W211	Emirov Anar	13	53.5	13.38	
W164	Rza Seferov	12	23	7.67	
W6	Kamran Aliyev	11.25	96.75	24.19	
W91	Valeh Orucaliyev	11	32		
W239	Mirsalam Fitter	10.5			
W230					

Fitter Performance Fitter Joint Performance **Welder Performance**

Excel PDF

Fitter	FitterId	Total: 987.75		Total: 5177.25	
		Daily	Weekly		
Anar Seferov	TL130	150	476.75		
Rahman Cavadzade	TL1	80	80		
Elmar Abbasov	TL154	66	124		
Recep Levent Yılmaz	TL25	60	132		
Hasan Yıldırım	TL12	56	168		
Taleh Hacıyev	TL49	54	115		
Zaur Nabiyev	TL76	50	270.25		
Kenan Eliyev	TL147	44	137		
Qayib Qayıbov	TL123	43.5	71		
Erdem Akyıldız	TL6	42	90		
Mehmet Kul	TL9	40	182		
Seymur Yaqupov	TL72	30	60		
Vasif Bayramov	TL79	29.25	101.25		
Fahri Alasgarlı	TL66	28	161.5		
Ozcan Cetinkaya	TL113	26	142.5		
Elvin Cabbarov	TL71	22	67.25		
Qasimov Eli	TL124	21	168		
	TL132	14	34		
	TL29	12	91		
		11	70.5		

# PERFORMANCE TRACKING

The daily, weekly, monthly performances of the personnel are easily tracked.

# QUALITY CONTROL

RT HT PT														
Line Wise Welder Wise														
Excel PDF Search: <input type="text"/>														
Line	PWHT	NDE	Total Weld	First Production	Flange Weld	Required NDT Qty	Flange NDT Qty	Line NDT	Flange NDT	Line Status	Flange Status	HT Status	PT Status	NDT Request
AF0020401	YES	5.00%	36	0	0	2	0	0	0	Not Covered	Covered	Not Covered	Not Covered	Make Request
AF0020402	YES	5.00%	20	0	1	1	1	3	0	Covered	Not Covered	Not Covered	Covered	Make Request
AF4100401	YES	5.00%	27	0	4	2	1	1	1	Not Covered	Covered	Not Covered	Covered	Make Request
AF4100402	YES	5.00%	9	0	3	1	1	1	1	Covered	Covered	Not Covered	Covered	OK
AF4100501	YES	5.00%	16	0	4	1	1	1	1	Covered	Covered	Not Covered	Not Covered	OK
AF4100503	YES	5.00%	7	0	3	1	1	1	1	Covered	Covered	Not Covered	Covered	OK
AF4100701	YES	5.00%	15	0	5	1	1	1	1	Covered	Covered	Not Covered	Covered	OK
AF4100702	YES	5.00%	7	0	4	1	1	2	2	Covered	Covered	Not Covered	Covered	OK
AF4100703	YES	5.00%	4	0	1	1	1	1	1	Covered	Covered	Covered	Covered	OK
AF4101001	YES	5.00%	14	0	3	1	1	3	0	Covered	Not Covered	Not Covered	Not Covered	Make Request
AF4101003	YES	5.00%	9	0	3	1	1	1	1	Covered	Covered	Not Covered	Not Covered	OK
AF4101004	YES	5.00%	13	0	3	1	1	2	1	Covered	Covered	Not Covered	Not Covered	OK
AF4101005	YES	5.00%	14	0	3	1	1	1	1	Covered	Covered	Not Covered	Covered	OK
AF4101006	YES	5.00%	6	0	1	1	1	1	1	Covered	Covered	Covered	Covered	OK
AF4101007	YES	5.00%	7	0	1	1	1	1	1	Covered	Covered	Not Covered	Covered	OK



HAOR PROJECT U-67 THREATED WATER  
RECOVERY/ BAKU AZERBAIJAN  
( ON GOING )





HAOR PROJECT FCC GASOLINE HYDRO  
TREATMENT UNIT / BAKU AZERBAIJAN  
( Completed )





HAOR PROJECT FCC GASOLINE HYDRO  
TREATMENT UNIT / BAKU AZERBAIJAN  
( Completed )





FLAGPOLE PROJECT / BAKU AZERBAIJAN  
( COMPLETED )





HAOR Modernization & Reconstruction  
(Completed)





HAOR Modernization & Reconstruction  
(Completed)





HAOR Modernization & Reconstruction  
(Completed)





HAOR Modernization & Reconstruction  
(Completed)





HAOR Modernization & Reconstruction  
(Completed)





HAOR Modernization & Reconstruction  
(Completed)





HAOR Modernization & Reconstruction  
(Completed)



- Client : SOCAR (AZ)
- Contractor : Tecnimont (ITA)
- Subcontractor: Prokon (AZ)

Scope: 400000 WDI  
Erection and Fabrication

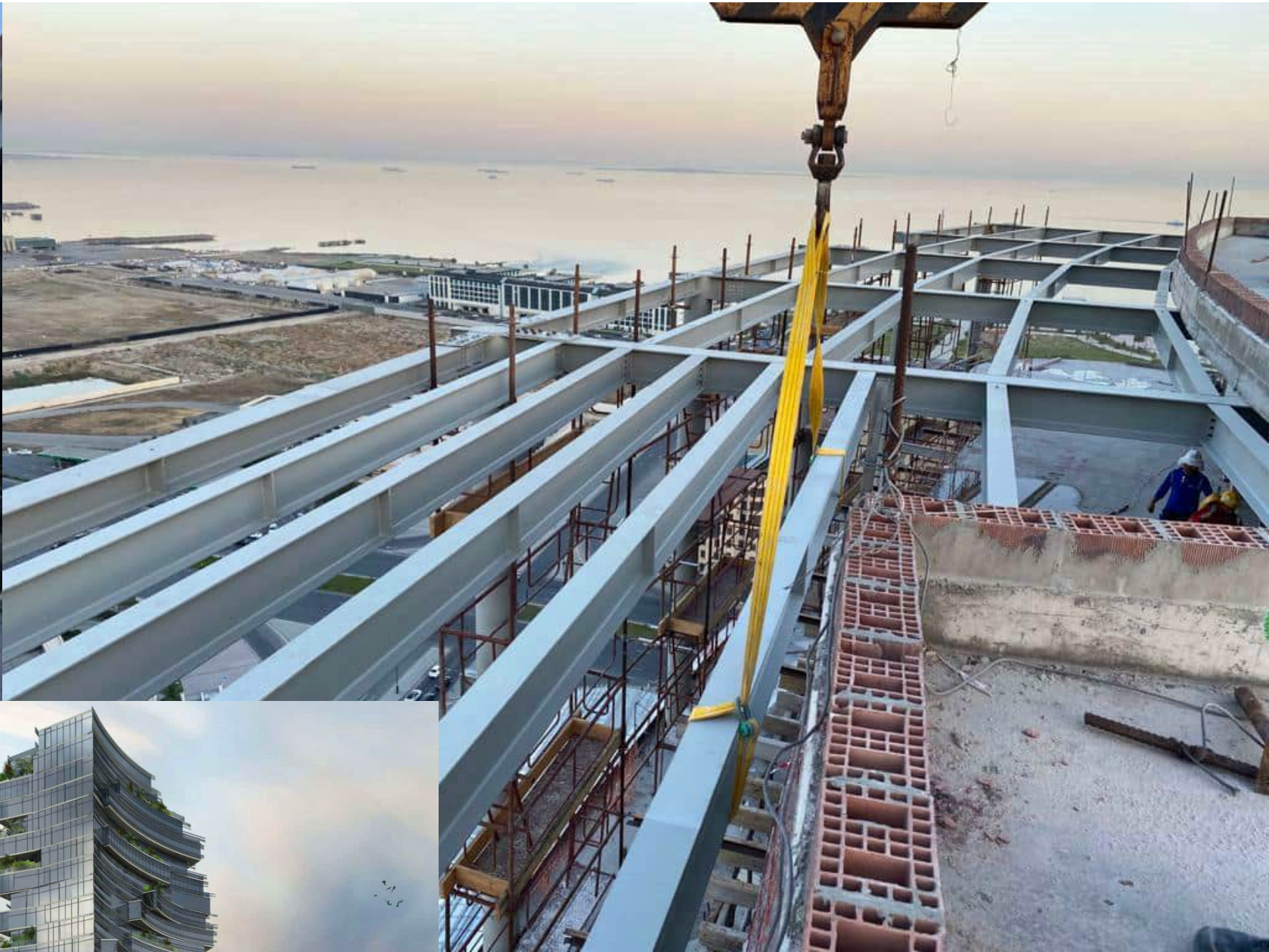


HAOR Cooling Water Tower AboveGround Piping  
(Completed)





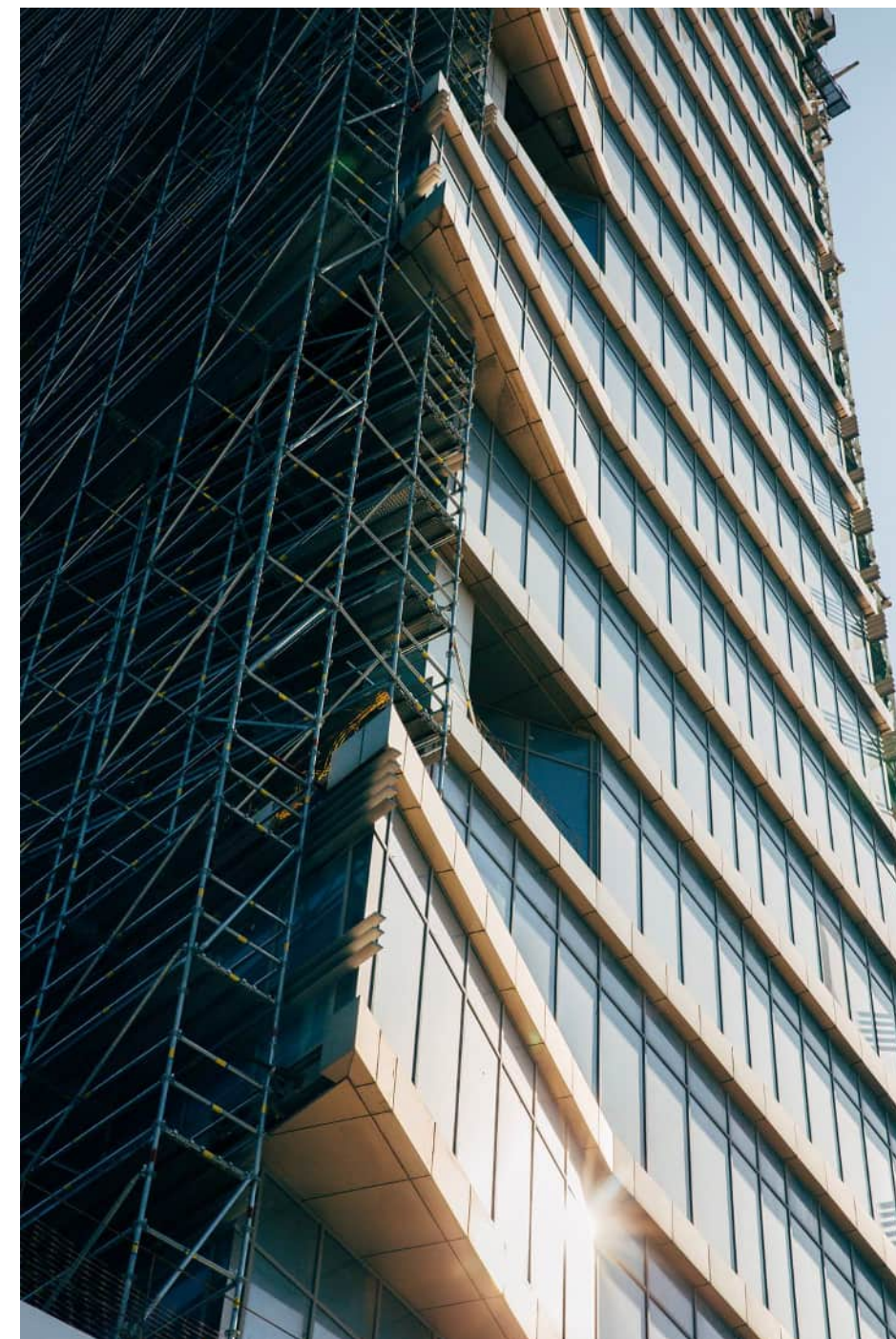
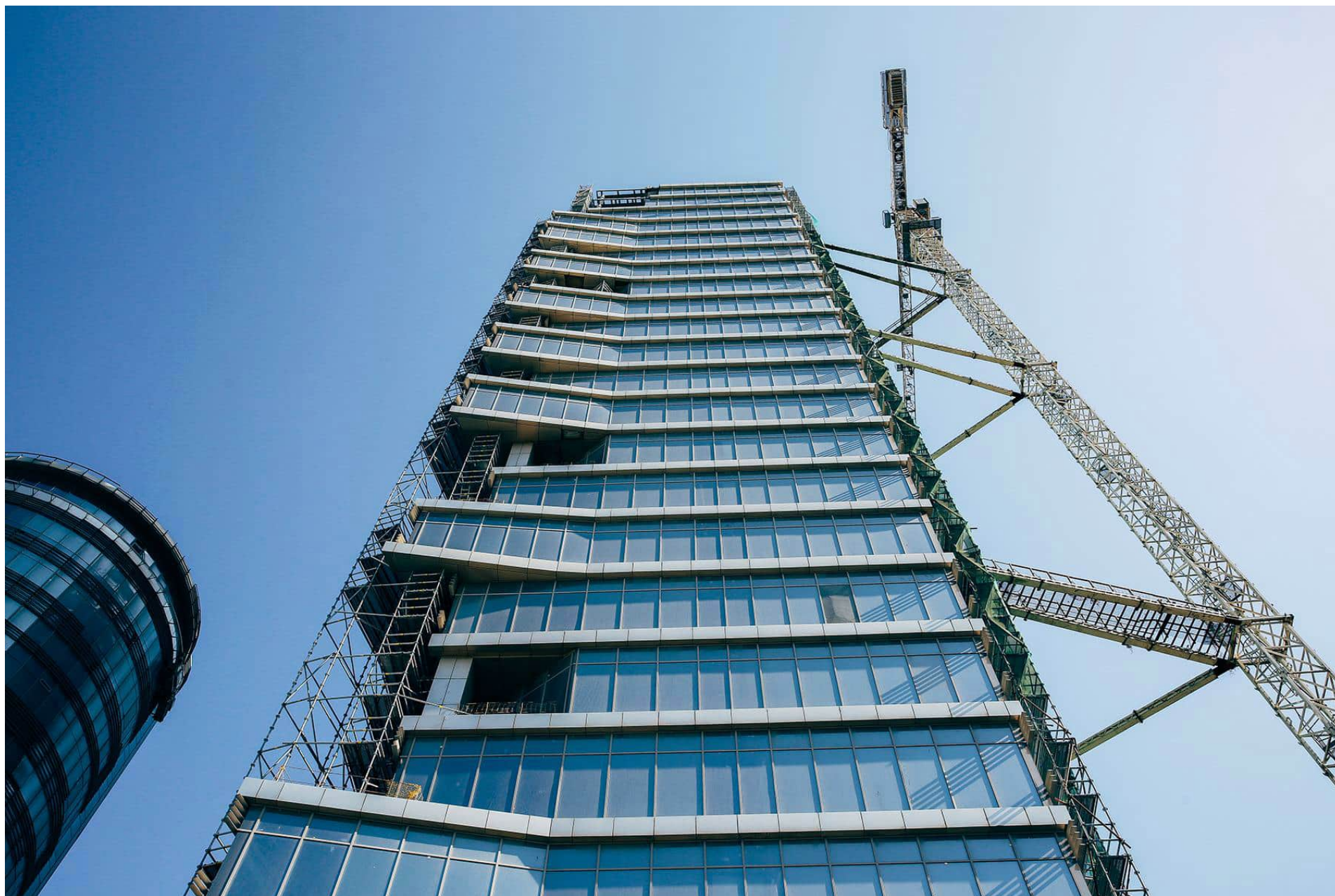
RAVY Tower Steel Structure  
(Completed)





# Our Projects

RAVY TOWER STEEL STRUCTURE  
FABRICATION & INSTALLATION  
BAKU / AZERBAIJAN (COMPLETED)





SOCAR Polymer & HDPE Plant  
(Completed)





## Socar Polymer & HDPE Plant (Completed)

- Client : SOCAR (AZ)
- Contractor : Tecnimont (ITA)
- Subcontractor: Ustay (TR)

Scope : 240.000 WDI

Fabrication and Erection





SOCAR Polymer & HDPE Plant  
(Completed)







IRAQ/HALFAYA/CPF  
- Client : Missan oil company (IRQ)  
- Contractor : PetroChina (CHN)  
- Subcontractor: Sert Oil (IRQ)

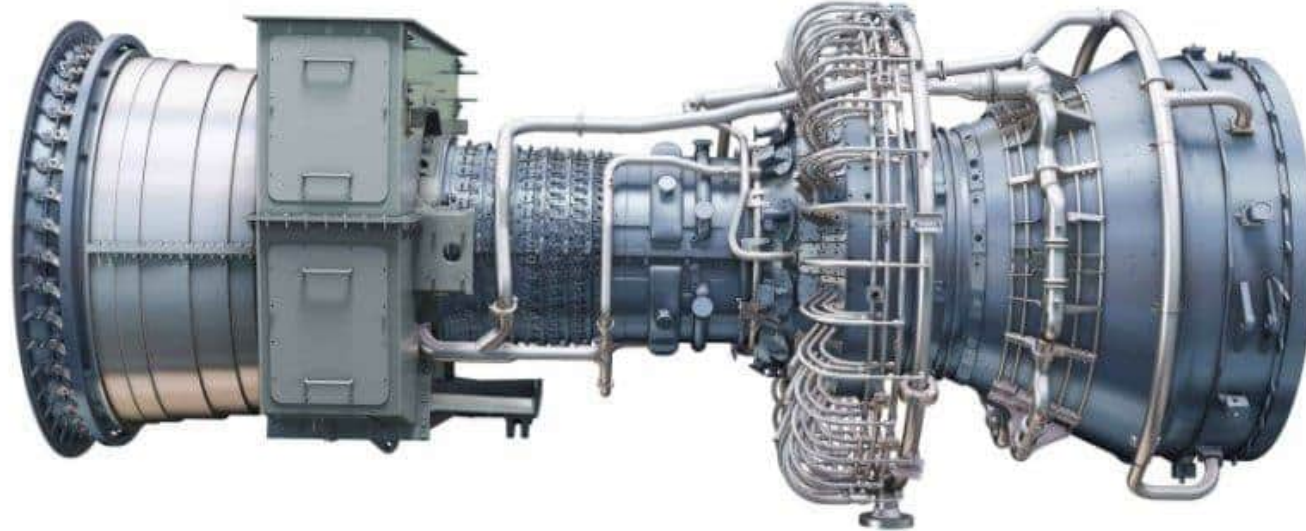




# DUHOK GAS POWER STATION

## 9 FA GAS TURBINE INSTALLATION

Mechanical Works  
(COMPLETED)





IRAQ DUHOK Gas Power Station  
(Completed)





# Our Projects

Duhok - Sulaymaniyah - Erbil  
Independent Power Plant Project GE 9FA Turbine Zozik Group  
(COMPLETED)



IRAQ/DUHOK-SULAYMANIYAH  
- Client : Mass Group (IRQ)  
- Contractor : ABB (CH)  
- Subcontractor: Zozik Group (IRQ)

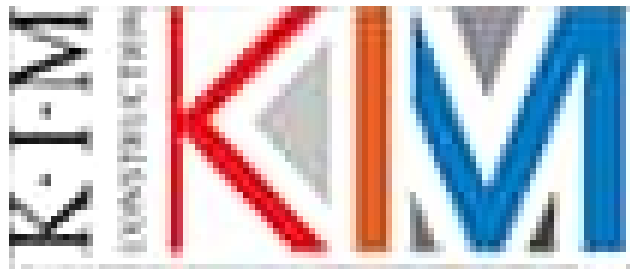








# OUR CUSTOMERS







## CONTACTS

Haor Office : Caspian Sport Plaza C-6/603

Baku/Azerbaijan

Phone : +994 50 209 67 50 (AZ)

Main Office : Kultur Mh.207 Sk.No:7/4 Aliaga-Izmir/Turkey

Phone : +90 533 422 8847 (TR)

